

# Te Horo Farmstay and Equestrian Centre

Te Horo Farmstay offers guests comfortable accommodation with rural charm at Te Horo Equestrian Centre. Our newly converted milking shed gets all day sun, has a private courtyard for outdoor dining with 360 deg views. It also has a drive-on ramp and accessible bathroom for guests in wheelchairs.

## Contact Information:

**Phone:** 06 3643338

**Mobile:** 0274 486764

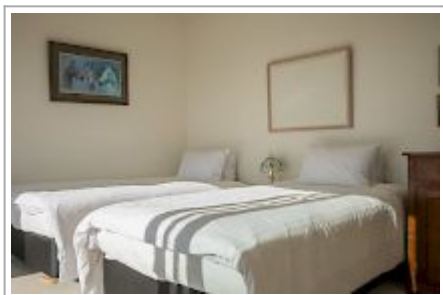
**Address:** 737 State Highway One,  
Te Horo, Otaki 5581

**Hosts:** Mandy Robinson

**Location:** We are located ten minutes north of Paraparaumu, six minutes north of Waikanae

**Directions:** Te Horo Farmstay is situated at 737 State Highway One, one hour north of Wellington's International Airport. We are situated on the seaward side of State Highway One. Our sign, Te Horo Equestrian Centre, indicates our entrance.

**GPS:** -40.8153093, 175.1099742



# Te Horo Farmstay and Equestrian Centre Map

