

# Mangawhai Lodge - a room with a view

Mangawhai Lodge offers stylish relaxed accommodation with spectacular sea views 2 hours north of Auckland Airport. Two quality B&B rooms with verandas & sea views or two self catering apartments. Opposite golf course & café, a short walk to shops & harbour beach. Free wifi & off street parking

## Contact Information:

**Phone:** 09 431 5311

**Mobile:** 027 496 0029

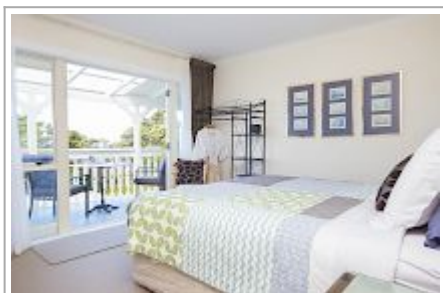
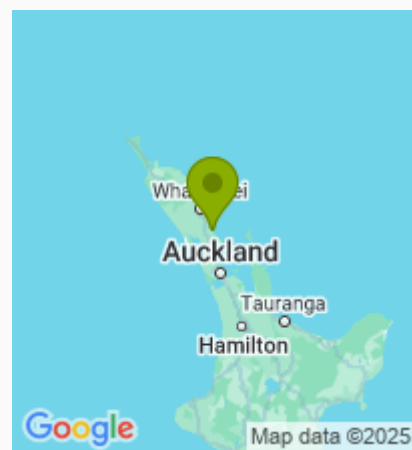
**Address:** 4 Heather Street,  
Mangawhai Heads, Mangawhai

**Hosts:** Jeannette Forde

**Location:** 80 minutes drive north of Auckland, 50 minutes south of Whangarei.

**Directions:** From Auckland turn R off SH1 at Wayby Valley Rd (15 min. north of Warkworth) follow sign to Mangawhai Heads. At Mangawhai Heads turn R off Molesworth Drive after Blue Harvest Cafe, Mangawhai Lodge is in front, up a drive with parking at the back

**GPS:** -36.1004276, 174.5888003



## Mangawhai Lodge - a room with a view Map

---

