

Sea Gypsy Motel

Clean and comfortable Self Catering accommodation short walk to beach, ferry, shops and restaurants. Fabulous base from which to explore the beautiful Coromandel Peninsula.

Contact Information:

Phone: 0211889814

Freephone: 07-8665263

Mobile: 0211889814

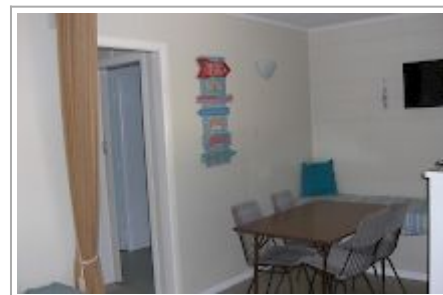
Address: 7 Mill Road, Whitianga, 3510

Contact: Monique Murphy

Location: Approximately 2.5 hours from Auckland, Tauranga, Hamilton and Rotorua.

Directions: 7 Mill Road Whitianga, zoned Waterfront as it's one back from The Esplanade behind Espi & Harbour House Cafes. Between Monk Street and the Esplanade Gull Service Station on the corner.

GPS: -36.8327999,
175.70657489999996



Sea Gypsy Motel Map

