

# The Boot (at Jester House)

A romantic fairytale hideaway, the Boot is a totally private cottage nestled in a hazelnut grove. The sunny courtyard has an openfire and inside there is another fire in the cosy lounge. The queen sized bedroom is up the spiral stairs and has a balcony looking out over the garden.

## Contact Information:

**Phone:** 35266742

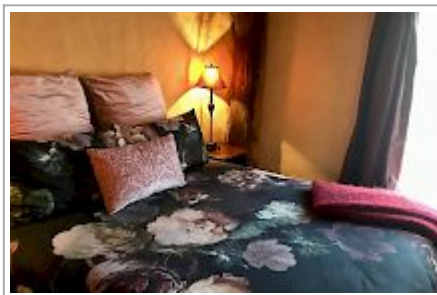
**Address:** 320 Aporo Road, RD 1

**Contact:** Judy van den Yssel

**Location:** 35 minutes west of Nelson heading for the Able Tasman Park

**Directions:** 35 minutes from Nelson in the direction of Able Tasman Park. 5 minutes from Mapua. Turn off the Coastal Highway to the Ruby Coast, (direction Tasman / Mapua) and we are 1km on the left

**GPS:** -41.1957862, 173.0578231



The Boot (at Jester House) Map

