

Arias Farm Bed & Breakfast

We have a stand-alone Tiny House plus 3 private bedrooms in our peaceful bed & breakfast lodge. Continental breakfast is provided. Kitchen access for all facilities.

Hot spa pool, BBQ, off-street parking, located on bush-lined 3 acres with animals to feed, yet still within the town boundaries.

Contact Information:

Mobile: 021753691

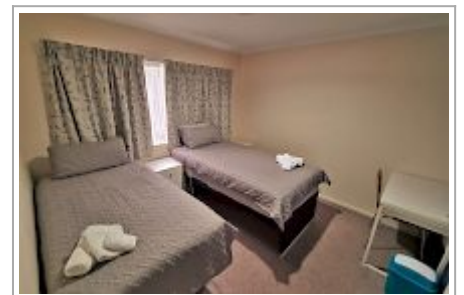
Address: 396 Clayton Rd,
Pukehangi, Rotorua

Hosts: Kerris & Chris Browne

Location: 8km from City Centre -
396 Clayton Rd, Pukehangi,
Rotorua 3015

Directions: We are located at the very top end of Clayton Rd, on the Northern side of town, between the Skyline gondolas and Paradise Valley lion park, at the base of Mt Ngongotaha, just 1km from the Speedway/Stock car track.

GPS: -38.133283, 176.1952732



Arias Farm Bed & Breakfast Map

