

Mangawhai Lodge - a room with a view

Mangawhai Lodge offers stylish relaxed accommodation with spectacular sea views 2 hours north of Auckland Airport. Two quality B&B rooms with verandas & sea views or two self catering apartments. Opposite golf course & café, a short walk to shops & harbour beach. Free wifi & off street parking

Contact Information:

Phone: 09 431 5311

Mobile: 027 496 0029

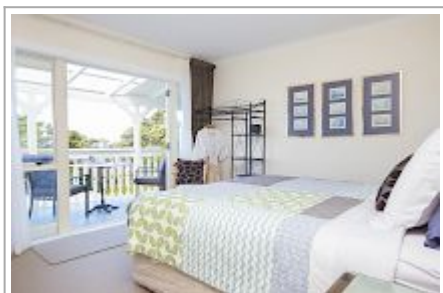
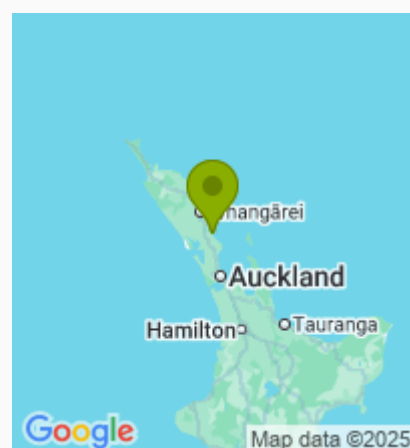
Address: 4 Heather Street,
Mangawhai Heads, Mangawhai

Hosts: Jeannette Forde

Location: 80 minutes drive north of Auckland, 50 minutes south of Whangarei.

Directions: From Auckland turn R off SH1 at Wayby Valley Rd (15 min. north of Warkworth) follow sign to Mangawhai Heads. At Mangawhai Heads turn R off Molesworth Drive after Blue Harvest Cafe, Mangawhai Lodge is in front, up a drive with parking at the back

GPS: -36.1004276, 174.5888003



Mangawhai Lodge - a room with a view Map

