

Kohatu Riverside Studio

Relaxing Country Riverside Studio in rural Nelson. Great for a single traveller or a couple. Country views and great birdsong. Right next to the Motueka river. Relax and enjoy. Well placed for a lot of outdoor scenic activities. National Parks, Skifield, Great Taste Cycle Trail and more.

Contact Information:

Phone: 64 0272822228

Mobile: 640272822228

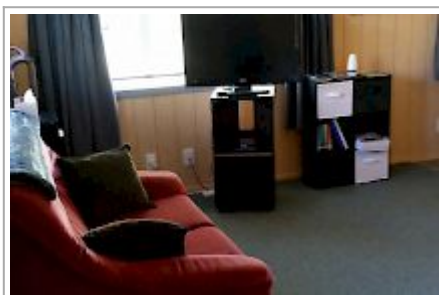
Address: 44 North Road, Kohatu,
Nelson 7096

Hosts: Donna

Location: 30mins from ST Arnaud
(National Lakes), 40mins from
Nelson, 30mins from Richmond

Directions: We are in North Road
in Kohatu in rural Nelson. Right
next to the Motueka river. Just off
State Highway 6. Great Taste Cycle
Trail at end of our road. Sign posted
on Highway. Just down the road
from the Kohatu Flat Rock Cafe.

GPS: -41.47345895948952,
172.83947539999997



Kohatu Riverside Studio Map

