

Baywick Inn

Welcome to the Baywick Inn, offering award winning hospitality, located right in the heart of Nelson New Zealand..the ideal base for discovering Nelson/Tasman districts. Fabulous gourmet breakfasts,free WIFI,with Genuine Kiwi/Canadian hospitality and a 'Trip Advisor Hall of Fame' winner 2011- 2017

Contact Information:

Phone: 03 545 6514

Mobile: 027 454 5823

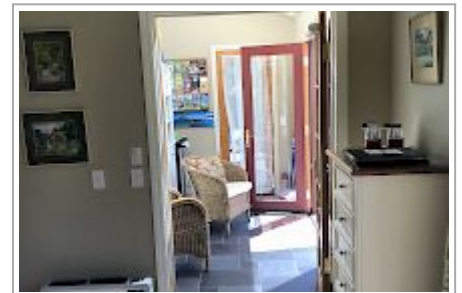
Address: 52 Domett St, Nelson

Hosts: Janet Southwick

Location: Located in the heart of Nelson city - 5 -10 min walk to CBD

Directions: From Trafalgar St in the center of town, drive East on Hardy St to Domett St, T intersection.(At the river turn right onto Domett St and we are the well hidden home at #52 Domett Street. Turn into the shared driveway at #51/52 and drive to the end.

GPS: -41.276244833539614, 173.29329143325197



Baywick Inn Map

