

TANGLEWOOD

Our modern architectural home is nestled amongst the native ferns overlooking the stunning Queen Charlotte Sounds.

Spa/jacuzzi in the garden and view glow worms in the evening.

Generous breakfast and evening meal available by request.

Only 5km to the Queen Charlotte Walkway, 2 min to jetty/beach.

Contact Information:

Phone: 03 5742080

Mobile: 0274 814 388

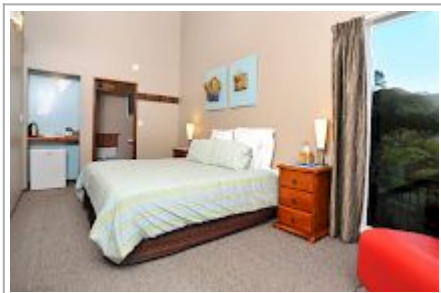
Address: 1744 Queen Charlotte Drive The Grove RD1 PICTON

Hosts: LINDA & STEPHEN HEARN

Location: 19km from Picton on scenic Queen Charlotte Drive.

Directions: When coming off Ferry turn right at roundabout onto Queen Charlotte Drive. We are 20 min drive on scenic Queen Charlotte Drive, look for Tanglewood sign and number on letter box 1744 Queen Charlotte Drive.

GPS: -41.27762825551948, 173.91870733068845



TANGLEWOOD Map

