

# 415 Marine Parade

415 Marine Parade is perfect for the discerning traveller who wants luxury accommodation in Hawke's Bay. The historical building has been newly refurbished and includes five modern, stylish and gloriously comfortable suites where you can refresh and relax.

## Contact Information:

**Phone:** +64 274869859

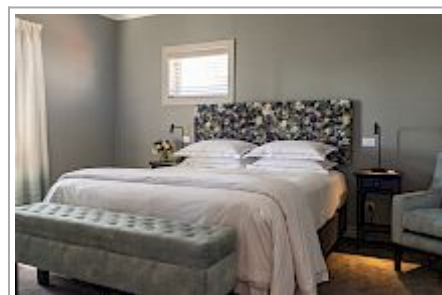
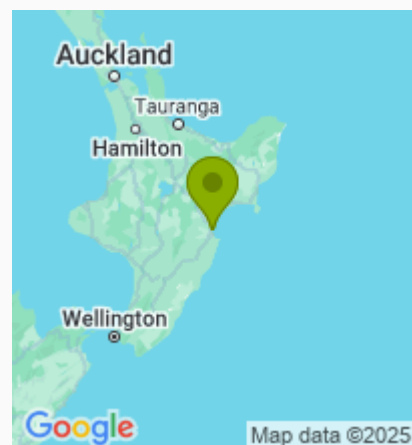
**Address:** 415 Marine Parade,  
Napier South, Napier, New Zealand

**Hosts:** Esther & Tom Seymour

**Location:** 800 metres from the centre of Napier City Centre, on the beach front

**Directions:** We are approx. 800 meters to Napier city centre, close to restaurants and cafes, and the wonderful art deco buildings of central Napier.

**GPS:** -39.4985403, 176.9184092



415 Marine Parade Map

