

Ongarue Cottage

At the end of the Timber Trail Cycleway and close to Waitomo Caves, Ruapehu Ski-fields, and more. Capacity for 9 guests (3 bedrooms with ensuite bathrooms and 1 bedroom with separate bathroom). Hot tub for 10, two hectares of gardens and orchards, bordered by a trout-filled river.

Contact Information:

Phone: 0272579960

Mobile: 0272579960

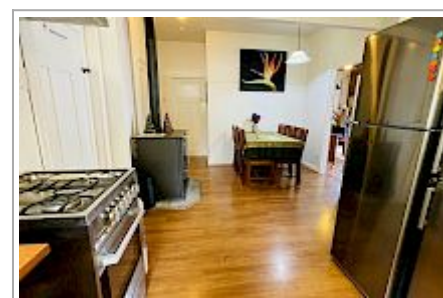
Address: 52 Ongarue Village Road,
Ongarue, New Zealand

Hosts: Jennifer & Richard

Location: Ongarue, Ruapehu District (at the end of the Timber Trail Cycle Way)

Directions: We are 3km off State Highway 4 at the Ongarue Junction (60 km south of Te Kuiti, 20 km north of Taumarunui, 85 km west of Turangi, Lake Taupo). There are bus services from many cities and Taumarunui is a main stop on the Great Journeys Rail Line.

GPS: -38.7156308, 175.2840649



Ongarue Cottage Map

