

The Cypresses Bed & Breakfast

Sitting proudly on landscaped grounds and beautiful gardens in the quiet inner city suburb of Matua, The Cypresses is one of the area's original homesteads. The tastefully decorated, sunny west facing private suite has its own entrance, bedroom, living room and bathroom with laundry.

Contact Information:

Phone: 07 576 6406

Mobile: 021 231 5342

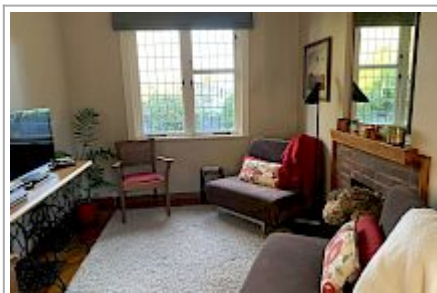
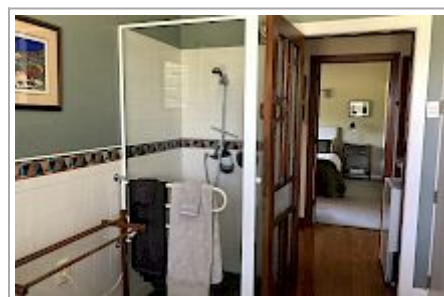
Address: 25 Ranui
Street, Matua, Tauranga

Hosts: Belinda Ford

Location: 3 hrs to Auckland, 1 hr to Rotorua, 45 min to Matamata

Directions: Matua is a peninsular within the larger peninsular of Otumoetai. Ranui St is the first right turn off Levers Rd, which runs the length of Matua. You will notice 3 tall cypress trees on the boundary at number 25.

GPS: -37.6631563, 176.1348767



The Cypresses Bed & Breakfast Map

