

Oceanspray Homestay

A warm welcome to our slice of paradise at our Beachside Homestay. Wonderful sea views from our upstairs decks - wine/home baking and warm hospitality. Downstairs, a fully self contained private apartment has three bedrooms, two bathrooms(one an ensuite). Families welcomed.

Contact Information:

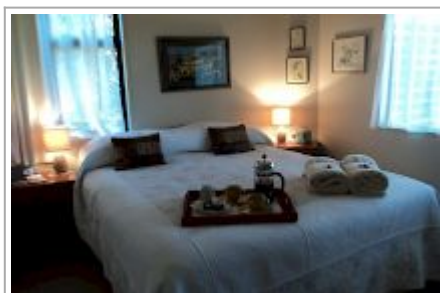
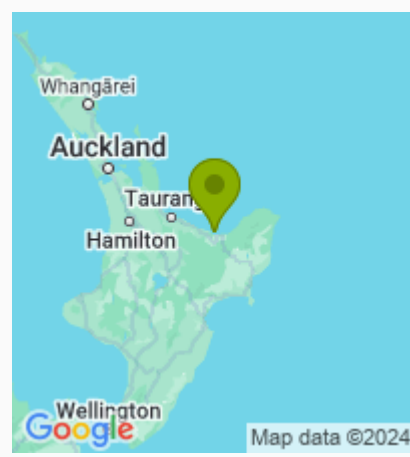
Phone: 07 312 4112
Mobile: 0272866824
Address: 283A Pohutukawa Avenue, Ohope

Hosts: Frances & John Galbraith

Location: 7 Minutes from Whakatane, 1.30 hrs from Rotorua

Directions: A 7 minute drive from Whakatane, the nearest town. Follow the signs through Whakatane to Ohope. In Ohope, turn right into Pohutukawa Avenue, for approx 3 km and our Homestay is signposted on the street at 283A

GPS: -37.9723766, 177.0630036



Oceanspray Homestay Map

