

# Stone Store Lodge

A new (2006) architecturally designed lodge with your privacy in mind. Three suites with own decks. Water and bush views. Great location. Walking distance to Historic Stone Store, the "Pear Tree Restaurant" on the water, "Food at Wharepuke" and to town. A bush bath and pizzas by prior arrang

## Contact Information:

**Phone:** 09 407 6693

**Mobile:** 0272330602

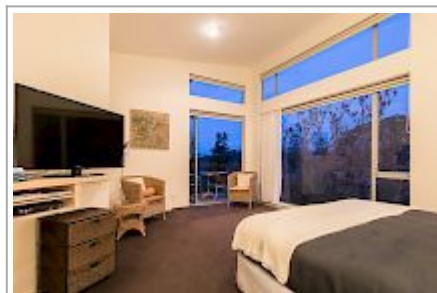
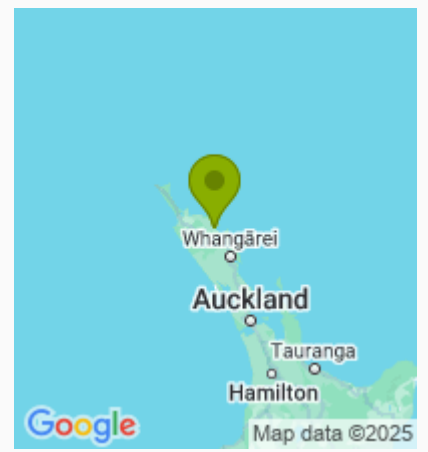
**Address:** 201 Kerikeri Road,  
Kerikeri

**Hosts:** Richard Miller

**Location:** Central to Bay Of Islands. Walking distance to restaurants and historic park.

**Directions:** Stone Store lodge 5 minutes from the airport. Within meters from the Historic Stone Store. Travel through town through two roundabouts. Do not turn left at the second roundabout as many guests do. We are above the St James Church.

**GPS:** -35.2179117, 173.9596083



# Stone Store Lodge Map

