

# B&B Blossom Cottage

## Blossom Cottage

The Art Deco, European style interior of the self contained cottage has exposed beams and vintage touches throughout: Living room with flat screen TV, two luxurious, inviting bedrooms: one Queen and one twin bedroom with 2 single king size beds, fully equipped, self-catering kitchen, heat pump, air conditioning, The bathroom has a heated towel-rail and a spacious shower, Private HOT TUB, laundry, BBQ, decking area with mountain and lake views, ample parking. We provide you with breakfast provisions, including home baking, cereals, jams, bacon and beverages.

The price is \$ 260 p/n for two people, additional people \$60 and cot \$20. (maximum 4 beds, 1 portable bed and 1 cot).

## The Vintage Room

A spacious, 42 sqm, luxurious room in vintage decor, with En-Suite, heat pump, Flat screen TV, tea and coffee maker, fridge and sitting area with garden and country views. Delicious home made full breakfast will be provided in our country kitchen. A free private Scandinavian Sauna and an in-house masseur is available. Ample off street parking.

The price is \$175 p/n for 2 people.

B&B Blossom Cottage is quiet, but close to Vibrant Rotorua City, Golf course, lake Rotorua and is central located to major cities and the coast.

## Contact Information:

**Phone:** 07 332 2720

**Mobile:** 027 7762653

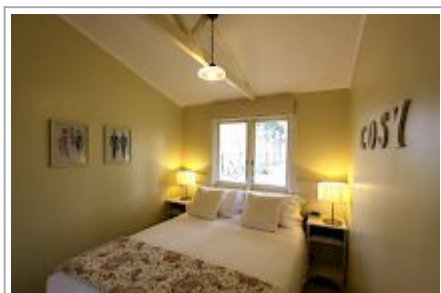
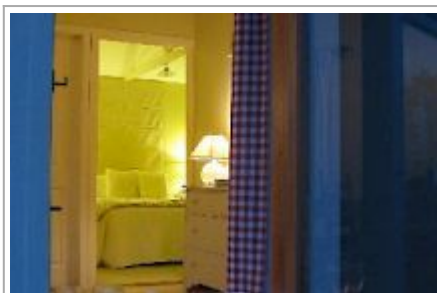
**Address:** 62A Sunnex Road  
Rotorua

**Hosts:** Rene & Marianne Pijnaker

**Location:** Blossom Cottage, is short, 15 minutes, drive from Rotorua.

**Directions:** Drive through Ngongotaha village, turn third road left into Central Road. Drive about 5 minutes until you reach Sunnex Road, at the end there is the sign "Blossom Cottage" 62A Sunnex Road.

**GPS:** -38.0197955,  
176.19431859999997



## B&B Blossom Cottage Map

---

