

Southern Belle Orchard B&B

Only 10 minutes from the Hobbiton Movie Set, on a beautiful feijoa orchard, our apartment is on the far end of the property, so very quiet and peaceful. It has beautiful views over the ancient Waikato river valley to the South and West, where beautiful sunsets can be admired. You will have your own private garden and terrace, leading to an outdoor hot Spa pool.

The apartment is equipped with kitchen facilities, spacious bathroom and a bedroom that can sleep two singles or a couple (King size). It is separated from the main house by a garage, so a lovely private spot where you can come and go as you please. A pull out Sofa-bed in the Lounge will sleep another couple or two young children.

The property itself has a successful greenhouse and feijoa orchard - feijoas are a popular New Zealand fruit with a unique and exotic flavour. See our website for more information:

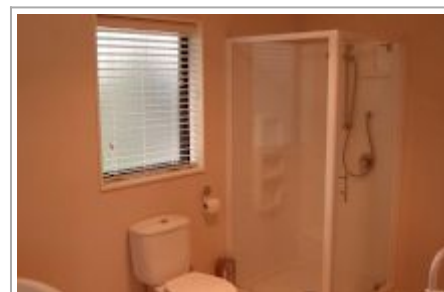
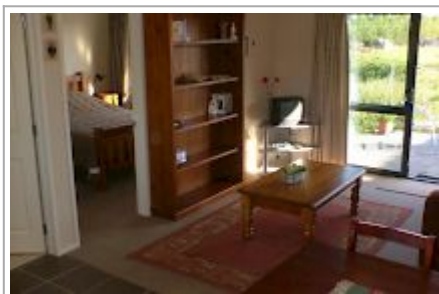
www.southernbelleorchard.com

We offer you:

- Continental breakfast (self served, so you can relax and have it in your own time) includes: Juice, fruit, eggs, bread, jam, cheese, yoghurt, cereal, complementary tea and coffee.
- 1 bedroom with 1 King Size bed or 2 Single beds
- The lounge has a Double Pull Out Sofa-bed
- Spa Pool under the stars
- A friendly service and enjoyable stay (no extra charge!)

Close by:

- Daltons Plantation - gardens & cafe & wedding venue - only minutes away
- Hot springs, golf courses
- Cafes, pubs, restaurants
- Bush walks, tramping
- Lake Karapiro
- Supermarkets & shops



Contact Information:

Phone: 078886412

Mobile: 021610703

Address: 418B Hinuera Road,
Matamata

Hosts: Emily Meese

Location: 45 minutes from
Rotorua, Tauranga & Hamilton,

Directions: Hobbiton Movie Set is a 10 minute drive. Rotorua, Tauranga and Hamilton are a 45 minute drive. Auckland International Airport is approximately 1hr 30 minutes. Matamata is centrally located on SH 27.

GPS: -37.86016278375414,
175.7550216957702



Southern Belle Orchard B&B Map

