

# Somersal B&B & Wedding Venue (Waitomo Caves)

Somersal has available four queen bedrooms (sleeps up to 10) with views out onto the garden or towards the mountain. The Master Queen & Deluxe Queen bedrooms have en suites, while the other two Queen bedrooms share a bathroom with separate shower and toilet.

In the morning you'll wake to your choice of a tasty cooked or continental breakfast, and you can arrange for other meals as well.

The house has a sunny lounge, separate TV room, broadband internet, Sky television in the living area, ironing and clothes washing & drying facilities, and two shared bathrooms with separate showers and toilets. There is plenty of spare bedding and extra beds are easily arranged. To view interior photos of the house, click on Gallery.

For the semi-energetic there are lawn games of croquet and petanque, or many shaded areas where you can sit, relax, write and read... or you can splash in the pool in the late afternoon sun and take in the views across farmland, then enjoy wine and cheese on the front lawn amongst the roses, shrubbery and birdsong.

Somersal is centrally situated and ideal as a base for a large range of one day and longer trips. Within 1hr 30mins drive are three of New Zealand's most sought after tourist destinations, and many other fantastic destinations lie just as close. The world famous Waitomo Caves are only 30 minutes south from here.

## Contact Information:

**Phone:** 07 871 9199

**Mobile:** 021 232 3981

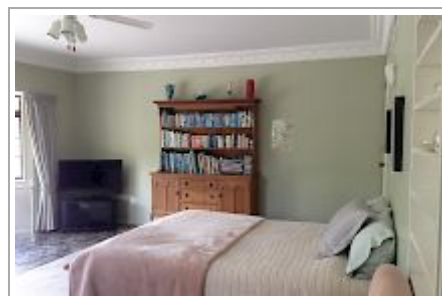
**Address:** 1724 McClure Street,  
RD6, Te Awamutu

**Hosts:** John & Jenny Mortland

**Location:** 30 mins north of the  
Waitomo Caves & 20 mins from  
Hamilton.

**Directions:** From Auckland and  
Auckland Airport: Take State  
Highway 1 South to Ngaruawahia.  
At the BP Service Station at  
Ngaruawahia, turn right onto State  
Highway 39 and keep following this  
road until you reach Pirongia  
(1.45hr)

**GPS:** -38.0030825,  
175.20178499999997



## Somersal B&B & Wedding Venue (Waitomo Caves) Map

---

