

# Karamana Homestead

Come stay at one of New Zealand's oldest homesteads to offer hosted accommodation. Built in 1872 this Category 2 historic place is a unique boutique homestead with three guest bedrooms and a self-catering Stables Cottage.

## Contact Information:

**Phone:** 078667138

**Mobile:** 0224620923

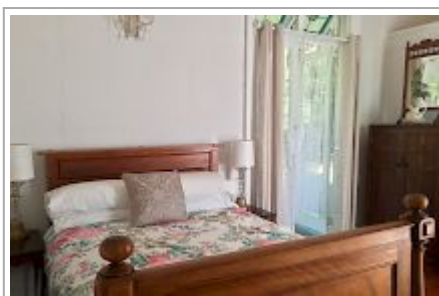
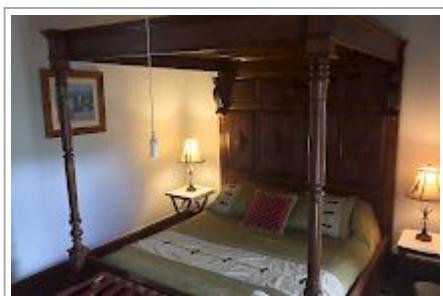
**Address:** 84 Whangapoua Road,  
Coromandel Town

**Hosts:** Ann-Marie and Ash

**Location:** Just a few minutes drive, or 15 minute walk, into Coromandel Town.

**Directions:** From Thames (1 hour), drive north to Coromandel Town and take a right turn on State Highway 25 (to Whitianga) approximately 200 meters before the town center. We are the corner-lot on the right, at the first curve in the road.

**GPS:** -36.7602049,  
175.50866059999998



## Karamana Homestead Map

---

